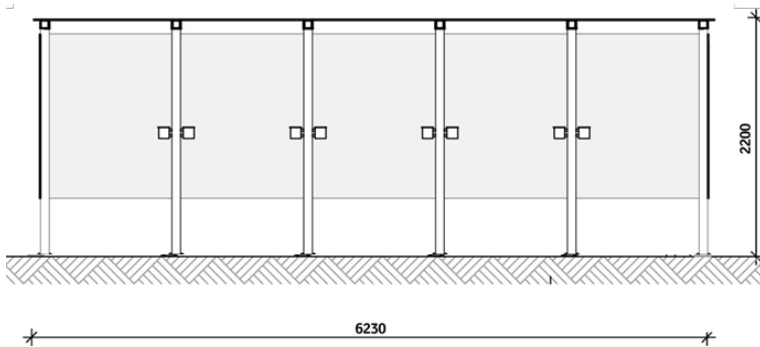
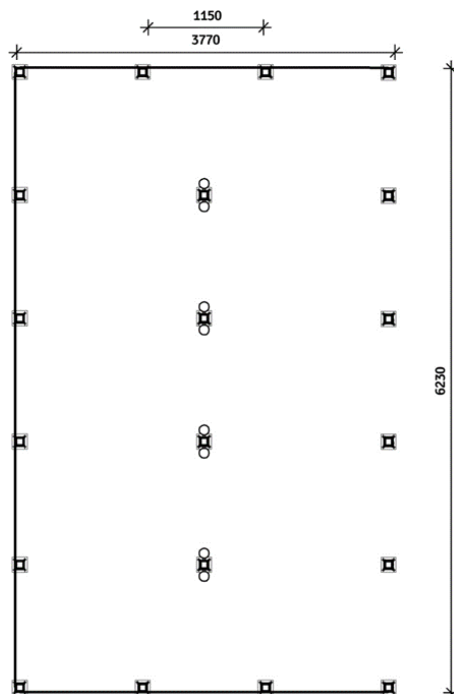


SMOKING SHELTER TYPE 15

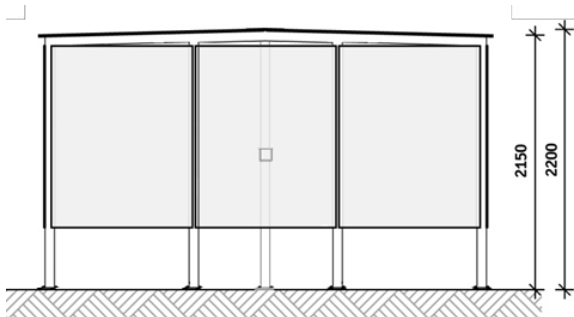
FRONT



PLAN



SIDE



DIMENSIONS

Capacity 40-50 persons

INTERIOR

2200x6230x3770 (HxWxD)

ENTRANCE

1150

SPECIFICATIONS SURFACE

1. 60x6500x4000 (HxWxD)
2. level
3. Min 500mm free space around shelter

Materials

FRAME

Aluminium epoxy coated
RAL 7016

GLAZING

8 mm safety glass

ROOF

10 mm semi-transparent
laminated safety glass

FOUNDATION

On existing pavement
Optional on reinforced concrete slab

INCLUDES

8 ashtray round model
Seating is optional



RBce Outdoor NL

T. +31 (0) 252 576000
F. +31 (0) 252 576009

info@buitenroken.nl
www.buitenroken.nl

Bijlmermeerstraat 1
2131 AL Hoofddorp

RBce Outdoor DE

T. +49 (0) 211 238 555 192

info@dieraucherkabine.de
www.dieraucherkabine.de

Königsallee 27
D-40212 Düsseldorf

RBce Outdoor FR

T. +33 (0) 1 5695 1984
F. +33 (0) 1 5695 1616

info@abrifumeurs.fr
www.abrifumeurs.fr

37-39- Avenue Ledru Rollin
CS 11237, Paris Cedex 12
F-75570 Paris

RBce Outdoor UK

T. +44 (0) 115 894 4371

info@thesmokingshelter.co.uk
www.thesmokingshelter.co.uk

Spaces, 1650 Waterside drive,
Arlington business park, Theale,
Reading, RG7 4SA

RBce Outdoor BE

T. +31 (0) 252 576000
F. +31 (0) 252 576009

info@buitenroken.be
www.buitenroken.be

Bijlmermeerstraat 1
2131 AL Hoofddorp